

13 June 2022

Kia ora Neighbour,

New housing for 11 & 11A Waiohua Road, Greenlane

We are writing to provide an update on the progress of our development at 11 & 11A Waiohua Road.

Kāinga Ora has a large number of sites where we have old homes sitting on under-utilised large sections. Our intention is to better utilise these sections by building a greater variety of new, warm, dry homes, designed to complement the local environment and meet the needs of today's tenants.

The redevelopment at the location will see two old homes replaced with four new warm, dry homes. These homes will consist of:

- 2 x three bedroom duplex homes
- 2 x four bedroom standalone homes

The land is zoned Mixed Housing Suburban: Buildings in this zone are usually one or two storey, mainly stand-alone, and are set back from site boundaries with landscaped gardens.

A resource consent application for this redevelopment has been lodged and activity will soon begin on site, starting with the removal of the old, existing houses. Landscape plans are enclosed.

We have spoken with our customers who may be directly affected by our plans, and will support them through any redevelopment that may occur.

If you have any questions or concerns about any of the Kāinga Ora sites, please get in touch via email or contact phone below and ask to speak a Stakeholder Relationship Manager in the Central East Auckland Team.

Naku noa

Community Engagement and Partnerships Team
Central East Auckland
Freephone: 0800 801 601
Email: centraleastakl.region@kaingaora.govt.nz

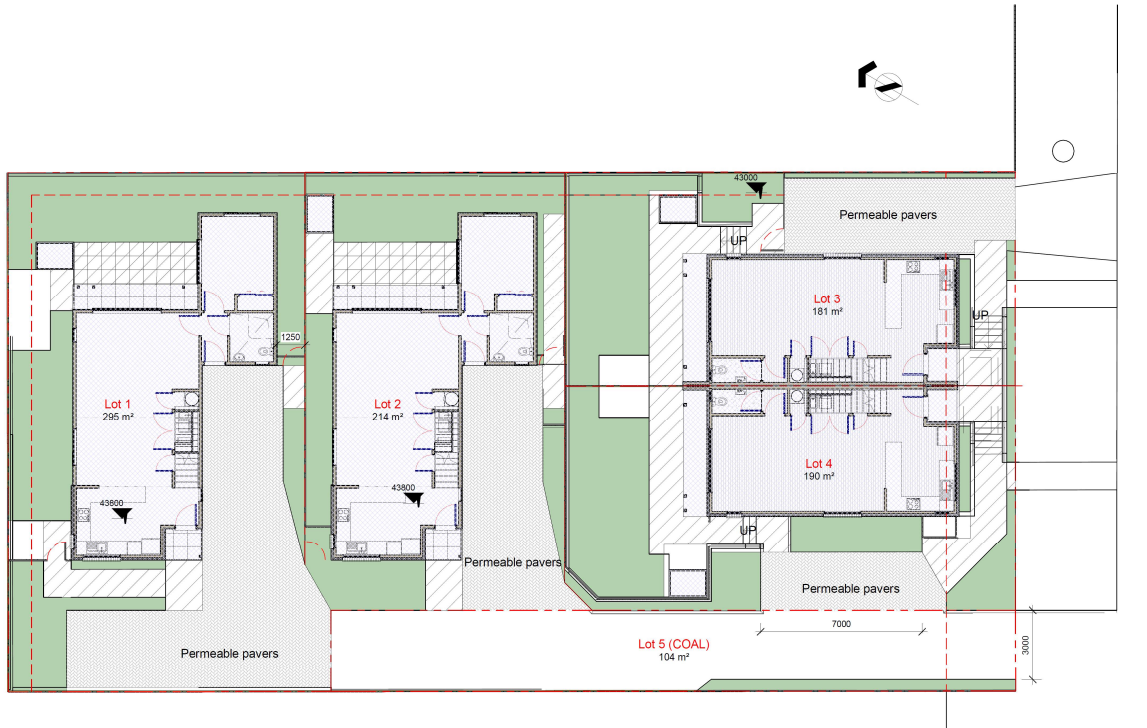


Figure 2: Landscape Plan

