

6 May 2023

ATTN  
ADDRESS

Dear Neighbour,

### **An update on our plans for 51a Alfred Street and 186 Church Street, Onehunga**

We wrote to you to advise that Kāinga Ora (formerly Housing New Zealand) is intending to redevelop its land at 51a Alfred Street and 186 Church Street, Onehunga. We are now writing to advise that resource consent for the development has been granted by Auckland Council.

Our intention is to better utilise land currently occupied by a small number of old houses on large sections. We will do this by building a greater variety of new, warm, healthy homes, designed to complement the local environment and meet the needs of today's tenants.

The land is zoned Terraced Housing and Apartments. This zone provides for urban residential living in the form of terraced housing and apartments of between five and seven storeys.

The development will have space for 4 x carparks and 4 x universal carparks/drop off, 2 visitor bike parks and bike/mobility scooter storage provided. For lifestyle and financial reasons, many of our tenants may choose to use public transport in preference to owning a car.

This development is intended for senior living. A 4-5 storey apartment which will include:

- 29 x one-bedroom units
- 1 x Community Room
- 1 x Meeting Room
- 1 x Drying Room
- 1 x Concierge

A site plan and landscape plan are enclosed. We will be in touch with construction details once confirmed with our build partner.

For more information on the Auckland Housing Programme, please visit our website at <https://kaingaora.govt.nz/developments-and-programmes/what-were-building/public-housing-developments/>

If you have any questions, please get in touch via the contact details below.

Kind regards

Central and East Auckland  
Community Engagement and Partnerships  
Kāinga Ora – Homes and Communities  
Email: [centraleastakl.region@kaingaora.govt.nz](mailto:centraleastakl.region@kaingaora.govt.nz)  
Freephone: 0800 801 601

**Figure 1: Site Plan**

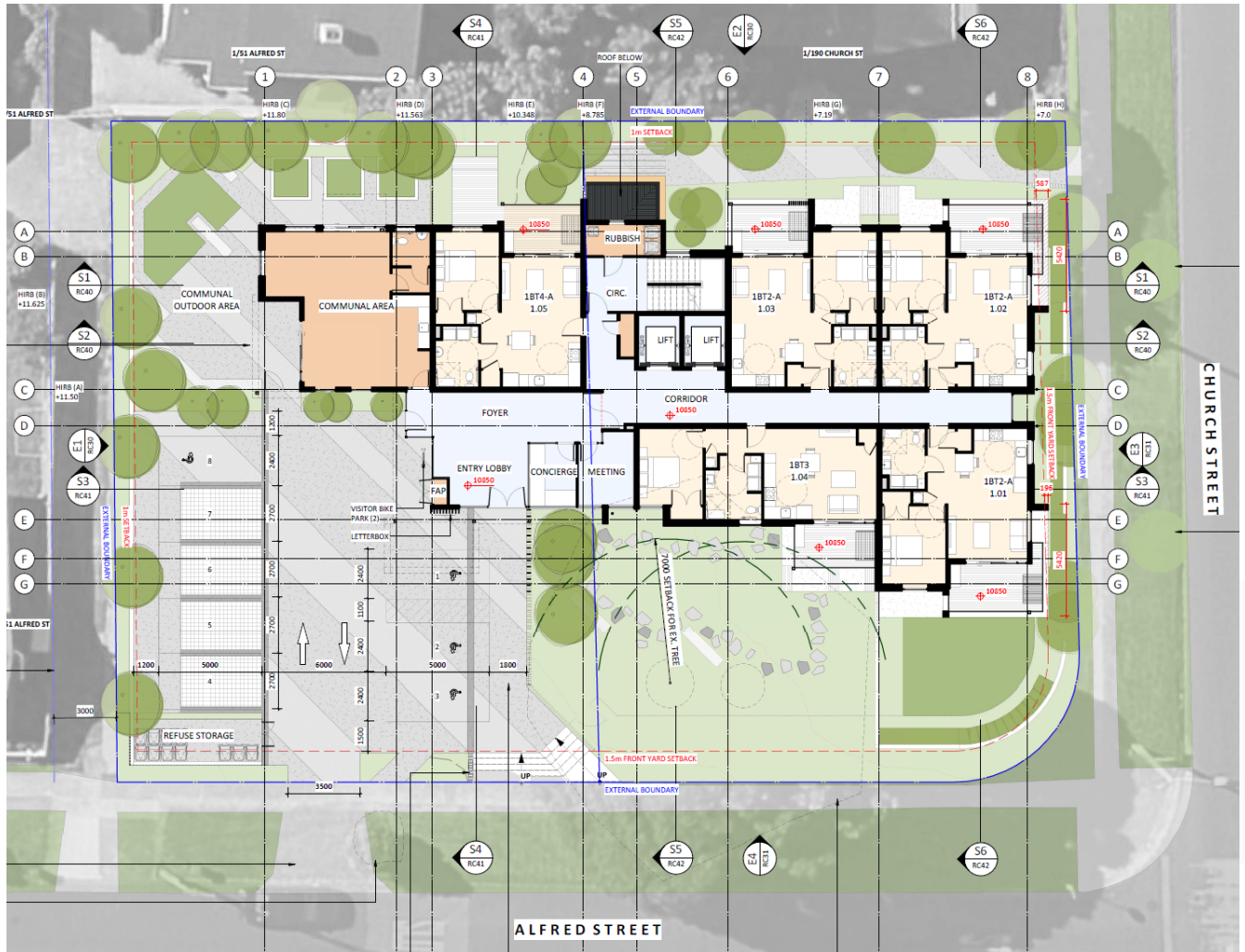


Figure 2: Landscape Plan

*Note: The existing Pohutukawa tree remains and the ground beneath remains unaltered.*

